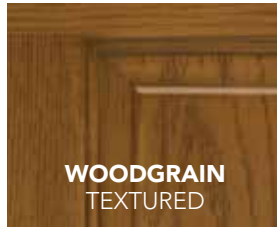
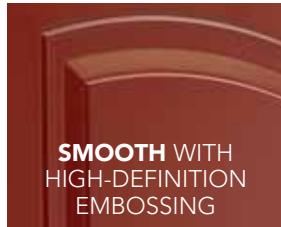
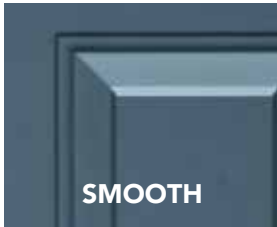


# LEGACY™ STEEL

Legacy Steel features add up to a professional-class product. Whether you select Legacy Woodgrain Textured Steel or Smooth Steel, our entry systems will provide an elegant, durable and energy efficient addition to any home.

## LEGACY SKIN OPTIONS



### CUSTOM WIDTHS & HEIGHTS

Need a little more height or a little less width? We offer customized door and sidelite widths and heights in 1/8" increments.



### CUSTOMIZE BOTH SIDES

You can customize your entry by ordering a different series, style and finish on each side of your door.



Most Legacy Steel Entry Systems are ENERGY STAR® Certified.

### 10-YEAR FINISH WARRANTY\*

See pgs. 40-42 for paint and stain finishes.

Legacy Steel Doors with full-lite or half-lite decorative glass with ComforTech™ glazing will include a pane of Low-E glass in order to be ENERGY STAR certified. This includes the following styles; 150, 230, 239, 240, 350, 430, 437, 439 and 460. Since Low-E glass has a slight color tint, it is recommended that sidelites and transoms are ordered with optional Low-E pane to match the door.

## LEGACY STEEL DOOR STYLES

 400 ○◆△	 110 ◆	 112 ◆△	 113 ◆	 114 ◆△	 115 ◆	 116 ◆	 437-1P ▲	 437-1PP ▲	 437-2P ▲	 430-2P ○◆△	 430-1P ◆	 430-1PP ◆	 230 ◆△	 439 ○◆△	 239 ◆△
 150 ◆	 440-2P ○◆	 240 ○◆	 350 ○◆△	 460 ○◆△	 420S ■	 420-2P ◆	 420-4P ○◆△	 419-4P ○◆△	 206 ○◆△	 410 ○◆△	 001 ○◆△	 002 ◆	 002S ■	 003C ◆	 003S ■

 002C-437 ◆	 002CP-437 ◆	 003 ◆	 006 ○◆△	 005S ■	 009 ◆	 008 ◆	 106 ▲	 130 ▲	 139 ▲	 140 ▲	 160 ▲	 460 ○◆
-------------------	--------------------	--------------	----------------	---------------	--------------	--------------	--------------	--------------	--------------	--------------	--------------	---------------

## SIDELITES

- 20-gauge Woodgrain Textured Steel
- ◆ 20-gauge Smooth Steel
- ◆ 20-gauge Smooth Steel with High-Definition Embossing
- ◆ 24-gauge Smooth or Textured Steel (used with all 20-gauge doors)
- ▲ 20-gauge smooth shaker
- △ Available in 30" Single or 60" French Doors

Entry System U-Factor: As low as .17 (Tested to NFRC specifications for a 6 panel door with wood frame).

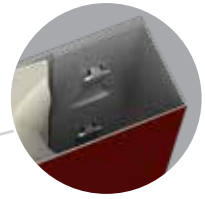
\* Warranty time period may be limited in extreme applications. See warranty for details.

† Patent - USD621062

▲ NOT available as an Impact Shield product



Composite top endcaps increase rigidity and energy efficiency.



**Special adhesives/thermal barrier** reduce heat and cold transfer, while our exclusive tab and slot system of **mechanical interlocks** gives the door exceptional structural strength.

ProVia doors are **foam filled by a computer driven process** that ensures the optimal foam fill for maximum energy efficiency and strength.

The edges and face skin of our steel doors are **one continuous piece of steel** for strength and durability.

To reinforce the lock and deadbolt area, we add a **rigid composite lock block** to all of our steel doors.

**Plugless Glass Trim** is optional on Legacy Steel. (see entryLINK for available styles)  
U.S. Patent: 9,562,389  
U.S. Patent: 9,976,338

Our 20-gauge steel doors give you **49% more galvanized steel** than a standard 24-gauge door.



Composite bottom endcaps increase rigidity and energy efficiency.

**Z-AC Threshold** with **auto-adjusting riser**. Standard with aluminum mill finish.

