

# SIGNET<sup>®</sup> FIBERGLASS



Signet Fiberglass doors are available in Mahogany, Cherry, Oak, Knotty Alder, Fir and Smooth Series. Structurally, the Signet door is far superior to traditional fiberglass doors with robust hardwood stiles and rails dovetailed at each corner. All Signet Fiberglass doors exhibit our exclusive DuraFuse™ Finishing System featuring P<sup>3</sup> Fusion, allowing us to offer an industry-best 15-year\* finish warranty.

## SIGNET SKIN OPTIONS



All fir doors standard with plugless trim.



### CUSTOM WIDTHS & HEIGHTS

Need a little more height or a little less width? We offer customized door and sidelite widths and heights in 1/8" increments.



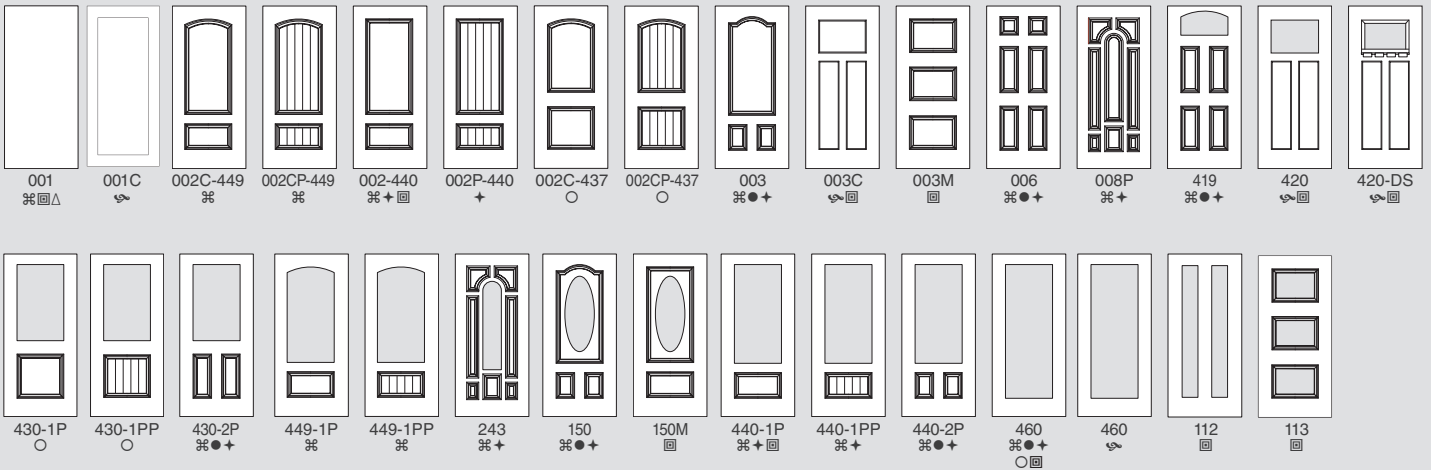
### CUSTOMIZE BOTH SIDES

You can customize your entry by ordering a different series, style and finish on each side of your door.

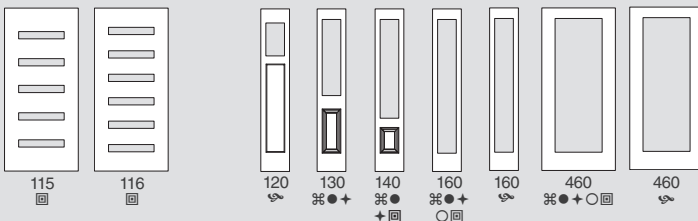


Most Signet Fiberglass Entry Systems are ENERGY STAR<sup>®</sup> Certified.

## SIGNET FIBERGLASS DOOR STYLES



## SIDELITES



- ⌘ Signet Cherry
- Signet Mahogany
- + Signet Oak
- Signet Knotty Alder
- ⌘ Signet Fir
- ⊞ Signet Smooth
- △ Available in 30" Single or 60" French Doors

Entry System U-Factor: As low as .16 (Tested to NFRC specifications for a 6 panel door with wood frame).

Note: All Signet doors are shipped finished.

\* Warranty time period may be limited in extreme applications. See warranty for details.

† Patents - USD617005, USD621062, USD621063, USD625837, USD625024



The inside door **frame is hand-stained or painted to match your door** providing you with a consistent visual appearance. (Signet doors are also available with a Steel L-frame.)



**Stiles and rails are dovetailed and glued** at each corner creating a structurally solid, integrated frame.



The **2 1/2" finger-jointed 3-ply hardwood hinge stile** provides superior structural integrity.

Signet doors are **foam filled by a computer driven process** that ensures the optimal foam fill for maximum efficiency and strength.

The **authentic wood look** is made possible by using cutting-edge **NVD** (Nickel Vapor Deposition) technology by MasterGrain™.

**Scientifically formulated compounds** provide superior resistance to denting, splitting, cracking and warping.

**High-definition panel profile** creates excellent shadow lines and distinct panel designs.

**Plugless Glass Trim** is standard on Signet  
Pat: 9,562,389  
Pat: 9,976,338

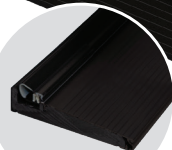
**Door edge** is constructed with Cherry, Mahogany, Oak or Fir wood matching the selected series.



The **4 1/4" finger-jointed 4-ply hardwood strike stile** provides a solid mounting surface for decorative hardware and superior structural integrity.

The revolutionary **DuraFuse™ Finishing System featuring P<sup>3</sup> Fusion** yields unprecedented finish durability.

**Z-AC Threshold with auto-adjusting riser.** Standard with anodized bronze finish.



A **high-performance, composite material** is utilized on all Signet fiberglass bottom rails, giving excellent rot-resistance.

